

INSTALLATION

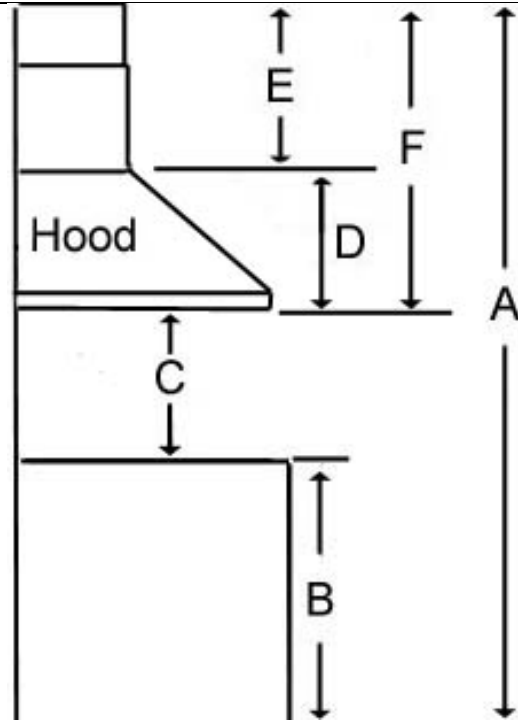
PLEASE READ ENTIRE INSTRUCTIONS BEFORE PROCEEDING

Calculation before installation

To calculate the length of the installation, please refer to Table 1. (All calculation is measure in inches.)

TABLE 1

A = Height of Floor to Ceiling
B = Height of Floor to Counter Top
(Standard: 36")
C = Preferred Height of Counter Top to Hood Bottom (Recommended 26" to 30")
D = Height of Hood
E = Height of Duct Cover [F - D]
F = Height of the Hood Installation
[A - (B+C)]



⚠ SAFETY WARNING

HOOD MAY HAVE VERY SHARP EDGES; PLEASE WEAR PROTECTIVE GLOVES IF REMOVING ANY PARTS FOR INSTALLING, CLEANING OR SERVICING.

NOTE: BE CAREFUL WHEN USING ELECTRICAL SCREWDRIVER, DAMAGE TO THE HOOD MAY OCCUR.

Preparation before Installation

NOTE: TO AVOID DAMAGE TO YOUR HOOD, PREVENT DEBRIS FROM ENTERING THE VENT OPENING.

- Decide the location of venting pipe from the hood to the outside. Refer to **Figure 1**.
- A straight, short venting run will allow the hood to perform more efficiently.
- Try to avoid as many transitions, elbows, and long run as possible. This may reduce the performance of the hood.
- Use duct tape to seal the joints between pipe sections.
- Temporarily wire the hood to test for proper operation before installing.
- If necessary, prepare back wall frame with cross framing lumber for secure installation. Using references on Table 1 and the measurements on pages 11-12, decide the level of the lumber. Refer to **Figure 2**.
- Peel protective film off the duct cover and the hood (if any).

Figure 1

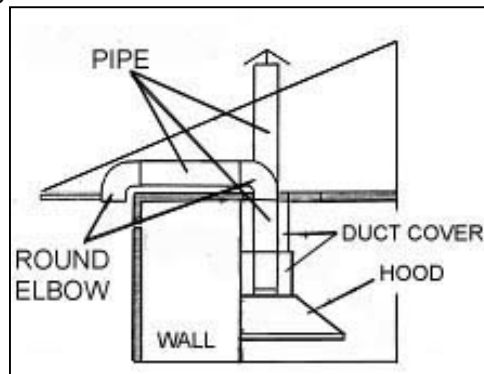
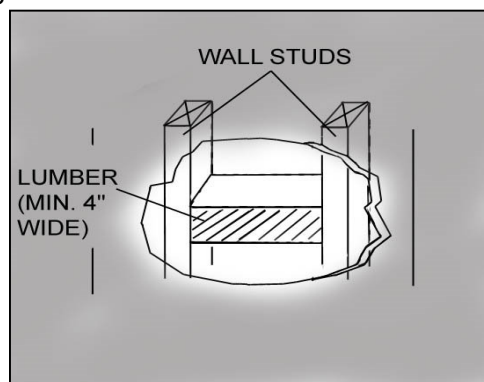


Figure 2

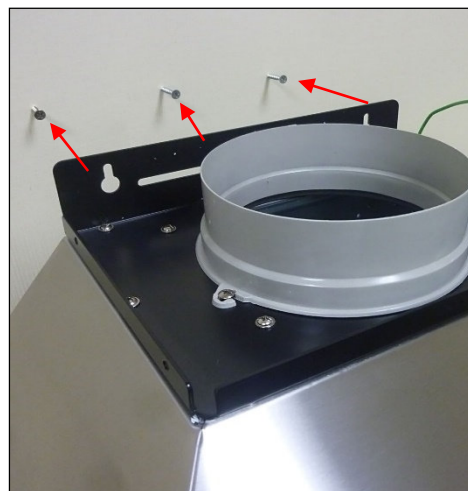


Hood Installation

CAUTION: If required to move the cooking range to install the hood, turn off the power on an electric range at the main electrical box. **SHUT OFF THE GAS BEFORE MOVING A GAS RANGE.**

1. Using references on Table 1 and measurements on pages 11-12, mark the leveling point for hood-mounting bracket on the wall.
2. Secure 3 mounting screws (provided) on the wall leaving 1/8" away from the wall. Refer to **Figure 3**.
3. Align hood-mounting bracket to the mounting screws on the wall and hook hood into place.
4. Secure and tighten the mounting screws. **CAUTION: MAKE SURE THE HOOD IS SECURE BEFORE RELEASING.**

Figure 3



Ductwork Installation

5. Use 6" round steel pipe (not provided) to connect the plastic exhaust on the hood to the ductwork above. Use duct tape to make all joints secure and air tight. Refer to **Figure 4**.

Wiring to Power Supply

⚠ THIS RANGE HOOD MUST BE PROPERLY GROUNDED. MAKE SURE THIS IS DONE BY QUALIFIED ELECTRICIAN IN ACCORDANCE WITH ALL APPLICABLE NATIONAL AND LOCAL ELECTRICAL CODES. BEFORE CONNECTING WIRES, SWITCH POWER OFF AT SERVICE PANEL AND LOCK SERVICE PANEL TO PREVENT POWER FROM BEING SWITCHED ON ACCIDENTALLY.

- If hood is operating normally, connect three wires (black, white and green) to house wires and cap with wire connectors.
- Store wires in the wiring box.

Duct Cover Installation

NOTE: BE CAREFUL WHEN USING ELECTRICAL SCREWDRIVER, DAMAGE TO THE HOOD MAY OCCUR.

6. Using reference **E** from Table 1 and measurements on pages 11-12, mark the leveling point for duct cover bracket.
7. Secure the duct cover mounting bracket to the wall with two screws (provided). Make sure all screws are tightened Refer to **Figure 5**. NOTE: Inner duct cover will cover the duct cover bracket.
8. Slide the entire duct cover onto the hood. Refer to **Figure 6**.

Figure 4

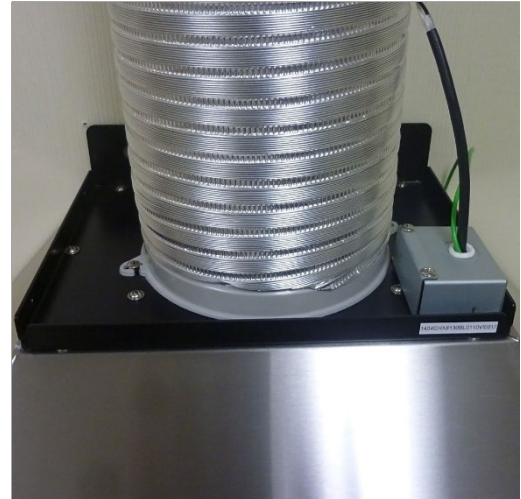


Figure 5

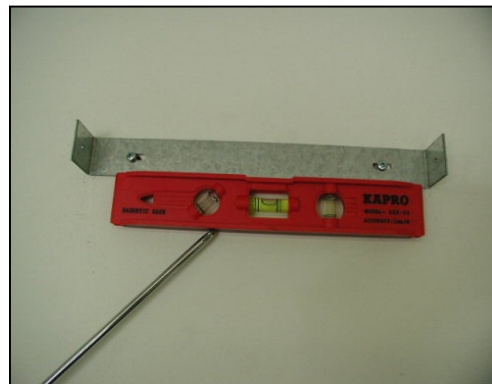
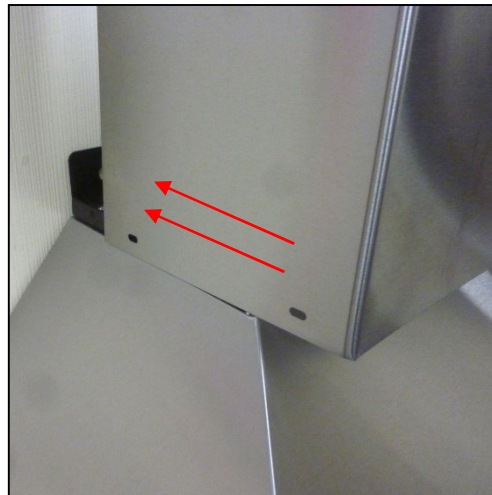


Figure 6



Duct Cover Installation (Cont.)

NOTE: BE CAREFUL WHEN USING ELECTRICAL SCREWDRIVER, DAMAGE TO THE HOOD MAY OCCUR.

- Secure the outer duct cover to the hood mounting bracket with 4 (3/16" x 3/8") screws (provided). Refer to **Figure 7**.
- Secure the inner duct cover with 2 (3/16" x 3/8") screws to the duct cover mounting Bracket. Refer to **Figure 8**.

Install Accessories

- Place baffle filters underneath the hood. Refer to **Figure 9**.

Final Assembly

- Turn power ON in control panel. Check all lights and fan operation.
- Make sure to leave this manual for the homeowner.

Figure 7



Figure 8

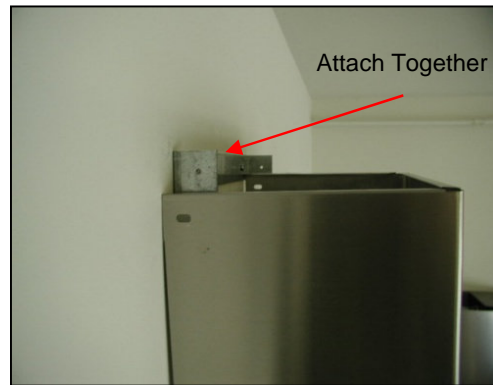


Figure 9

